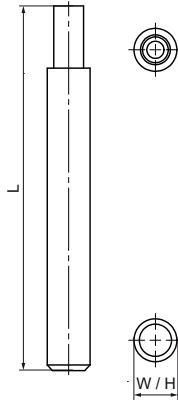


Walraven WGB-M Setting Tool

(L0383)

for installation of WGB-M



Features & benefits

- for use with WGB-M M10 or M12 aerated concrete anchors
- solid metal construction ensures high durability and many years of service

Product Number	For Thread Size	Total Height	Total Width	Total Length
Reference Letter	fts	H	W	L
Unit description		mm	mm	mm
6902511	M10/M12	20	20	170