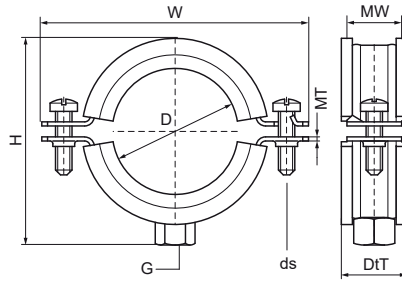


## Walraven Bifix® 1301 Stainless Steel (M8)

(M0505)

for stainless steel and plastic pipes



### Features & benefits

- two-screw clamp
- with quick locking system
- material: stainless steel 1.4404 (AISI 316L)
- noise insulating lining, EPDM rubber, black
- age resistant lining
- sound insulating lining according DIN 4109



Product Number	Outside Pipe Diameter	DN	Pipe Diameter Imperial	Connection Thread	Total Height	Total Width	Total Depth	Material Width	Material Thickness	Screw Size	Maximum Allowed Load Faz	Approvals
Reference Letter	D	D	D	G	H	W	DtT	MW	MT	ds	F <sub>a,z</sub>	
Unit description	mm		"		mm	mm	mm	mm	mm		N	
3117015	11 - 14	DN 8	1/4	M8	33	58	25	20	1.25	M6	900	RAL-GZ 655/B, ITB (KOT), EPD
3117018	15 - 19	DN 10	3/8	M8	37	62	25	20	1.25	M6	900	RAL-GZ 655/B, ITB (KOT), EPD
3117023	20 - 23	DN 15	1/2	M8	41	64	25	20	1.25	M6	900	RAL-GZ 655/B, ITB (KOT), EPD
3117029	25 - 28	DN 20	3/4	M8	47	70	25	20	1.25	M6	900	RAL-GZ 655/B, ITB (KOT), EPD
3117035	31 - 35	DN 25	1	M8	54	78	25	20	1.25	M6	900	RAL-GZ 655/B, ITB (KOT), EPD
3117043	40 - 43	DN 32	1 1/4	M8	61	85	25	20	1.25	M6	900	RAL-GZ 655/B, ITB (KOT), EPD
3117049	47 - 51	DN 40	1 1/2	M8	70	97	25	20	1.25	M6	900	RAL-GZ 655/B, ITB (KOT), EPD
3117056	52 - 56	-	-	M8	75	97	25	20	1.25	M6	900	RAL-GZ 655/B, ITB (KOT), EPD
3117063	57 - 64	DN 50	2	M8	80	102	25	20	1.25	M6	900	RAL-GZ 655/B, ITB (KOT), EPD
3117067	64 - 67	-	-	M8	87	109	25	20	2.00	M6	1,350	RAL-GZ 655/B, ITB (KOT), EPD
3117076	70 - 76	DN 65	2 1/2	M8	96	118	25	20	2.00	M6	1,350	RAL-GZ 655/B, ITB (KOT), EPD
3117091	86 - 91	DN 80	3	M8	108	130	25	20	2.00	M6	1,350	RAL-GZ 655/B, ITB (KOT), EPD
3117106	100 - 106	-	-	M8	132	154	25	20	2.50	M6	1,350	RAL-GZ 655/B, ITB (KOT), EPD
3117116	108 - 116	DN 100	4	M8	136	158	25	20	2.50	M6	1,710	RAL-GZ 655/B, ITB (KOT), EPD