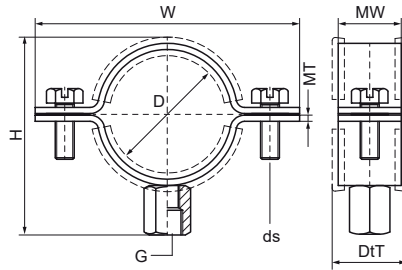


## Walraven Stainless Steel Pipe Clamp with Lining (M8/10)

(M0510)

for stainless steel and plastic pipes



### Features & benefits

- two-screw clamp
- for installations in corrosive atmospheres
- temper colours around weld polished to improve corrosive resistance
- screws secured with anti-loss washer
- material: stainless steel 1.4401 (AISI 316)
- noise insulating lining, EPDM rubber, black



Product Number	Outside Pipe Diameter	DN	Pipe Diameter Imperial	Connection Thread	Total Height	Total Width	Total Depth	Material Width	Material Thickness	Screw Size	Maximum Allowed Load Faz	Approvals
Reference Letter	D	D	D	G	H	W	DtT	MW	MT	ds	F <sub>0,z</sub>	
Unit description	mm		"		mm	mm	mm	mm	mm		N	
31179018	15 - 18	DN 10	3/8	M8/M10	48	67	23	20	2.00	M6	900	ITB (KOT), EPD
31179022	20 - 24	DN 15	1/2	M8/M10	50	69	23	20	2.00	M6	900	EPD
31179028	26 - 30	DN 20	3/4	M8/M10	57	77	23	20	2.00	M6	900	ITB (KOT), EPD
31179035	32 - 36	DN 25	1	M8/M10	62	82	23	20	2.00	M6	900	ITB (KOT), EPD
31179040	38 - 42	DN 32	1 1/4	M8/M10	70	90	23	20	2.00	M6	900	ITB (KOT), EPD
31179048	47 - 50	DN 40	1 1/2	M8/M10	76	96	23	20	2.00	M6	900	ITB (KOT), EPD
31179054	51 - 55	-	-	M8/M10	85	105	23	20	2.00	M6	900	ITB (KOT), EPD
31179060	60 - 64	DN 50	2	M8/M10	92	112	23	20	2.00	M6	900	ITB (KOT), EPD
31179070	67 - 73	-	-	M8/M10	99	119	23	20	2.00	M6	900	ITB (KOT), EPD
31179075	75 - 80	DN 65	2 1/2	M8/M10	107	127	23	20	2.00	M6	900	ITB (KOT), EPD
31179090	87 - 92	DN 80	3	M8/M10	120	140	23	20	2.00	M6	900	ITB (KOT), EPD
31179100	100 - 106	-	3 1/2	M8/M10	132	152	23	20	2.00	M6	900	ITB (KOT), EPD
31179110	106 - 112	-	-	M8/M10	138	158	23	20	2.00	M6	900	ITB (KOT), EPD
31179115	114 - 119	DN 100	4	M8/M10	150	170	23	20	2.00	M6	900	ITB (KOT), EPD
31179125	124 - 131	-	-	M8/M10	157	177	23	20	2.00	M6	900	ITB (KOT), EPD
31179140	133 - 140	DN 125	5	M8/M10	170	190	23	20	2.00	M6	900	ITB (KOT), EPD
31179160	159 - 165	DN 150	-	M8/M10	190	210	23	20	2.00	M6	900	ITB (KOT), EPD