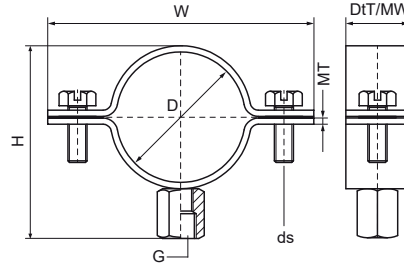


## Walraven Stainless Steel Pipe Clamp (M8/10)

(M1010)

for stainless steel and plastic pipes



### Features & benefits

- two-screw clamp
- for installations in corrosive atmospheres
- temper colours around weld polished to improve corrosive resistance
- screws secured with anti-loss washer
- material: stainless steel 1.4401 (AISI 316)



Product Number	Outside Pipe Diameter	DN	Pipe Diameter Imperial	Connection Thread	Total Height	Total Width	Total Depth	Material Width	Material Thickness	Screw Size	Maximum Allowed Load Faz	Approvals
Reference Letter	D	D	D	G	H	W	DtT	MW	MT	ds	F <sub>0,2</sub>	
Unit description	mm		"		mm	mm	mm	mm	mm		N	
30179017	15 - 18	DN 10	3/8	M8/M10	39	59	20	2	20.00	M6	1,700	ITB (KOT), EPD
30179022	20 - 24	DN 15	1/2	M8/M10	43	63	20	2	20.00	M6	1,700	ITB (KOT), EPD
30179028	26 - 30	DN 20	3/4	M8/M10	49	69	20	2	20.00	M6	1,700	ITB (KOT), EPD
30179035	32 - 36	DN 25	1	M8/M10	56	77	20	2	20.00	M6	1,700	ITB (KOT), EPD
30179040	36 - 42	DN 32	1 1/4	M8/M10	61	82	20	2	20.00	M6	1,700	ITB (KOT), EPD
30179048	47 - 50	DN 40	1 1/2	M8/M10	69	90	20	2	20.00	M6	1,700	ITB (KOT), EPD
30179054	51 - 55	-	-	M8/M10	75	96	20	2	20.00	M6	1,700	ITB (KOT), EPD
30179060	60 - 64	DN 50	2	M8/M10	84	105	20	2	20.00	M6	1,700	ITB (KOT), EPD
30179070	67 - 73	-	-	M8/M10	91	112	20	2	20.00	M6	1,700	ITB (KOT), EPD
30179075	75 - 80	DN 65	2 1/2	M8/M10	98	119	20	2	20.00	M6	1,700	ITB (KOT), EPD
30179090	87 - 92	DN 80	3	M8/M10	111	132	20	2	20.00	M6	1,700	ITB (KOT), EPD
30179100	99 - 105	-	3 1/2	M8/M10	123	144	20	2	20.00	M6	1,700	ITB (KOT), EPD
30179110	106 - 112	-	-	M8/M10	131	152	20	2	20.00	M6	1,700	ITB (KOT), EPD
30179115	114 - 119	DN 100	4	M8/M10	137	158	20	2	20.00	M6	1,700	ITB (KOT), EPD
30179125	124 - 131	-	-	M8/M10	149	170	20	2	20.00	M6	1,700	ITB (KOT), EPD
30179160	159 - 163	DN 150		M8/M10	181	202	20	2	20.00	M6	1,700	ITB (KOT), EPD
30179200	199 - 204	-	-	M8/M10	222	243	20	2	20.00	M6	1,700	ITB (KOT), EPD