

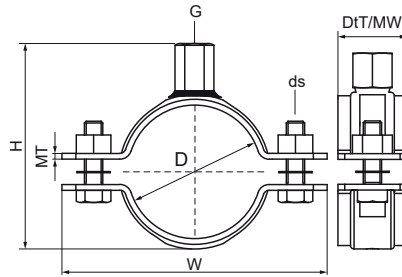
Walraven Stainless Steel Heavy Duty Clamp (M12, M16)

(M1202)

for stainless steel and plastic pipes

Features & benefits

- two-part clamp with two locking bolts
- heavy design
- with CO₂ welded connection nut
- material: stainless steel 1.4401 (A4) - EN 10088, AISI 316



Product Number	Outside Pipe Diameter	DN	Pipe Diameter Imperial	Connection Thread	Total Height	Total Width	Total Depth	Material Width	Material Thickness	Screw Size	Maximum Allowed Load Faz	Approvals
Reference Letter	D	D	D	G	H	W	DtT	MW	MT	ds	F _{a,z}	
Unit description	mm		"		mm	mm	mm	mm	mm		N	
33077078	72 - 78	DN 65	2½	M12	102	134	25	25	3.00	M10	2,200	ITB (KOT), EPD
33077085	79 - 85	-	-	M12	109	141	25	25	3.00	M10	2,200	ITB (KOT), EPD
33077092	86 - 92	DN 80	3	M12	116	148	25	25	3.00	M10	2,200	ITB (KOT), EPD
33077099	93 - 99	-	-	M12	123	155	25	25	3.00	M10	2,200	ITB (KOT), EPD
33077219	208 - 219	-	-	M12	245	307	40	40	4.00	M12	4,900	ITB (KOT), EPD
33077275	265 - 275	DN 250	10	M16	307	363	40	40	4.00	M12	4,900	ITB (KOT), EPD
33077289	279 - 289	-	-	M16	321	377	40	40	4.00	M12	4,900	ITB (KOT), EPD
33077116	108 - 116	DN 100	4	M12	142	184	30	30	4.00	M10	4,100	ITB (KOT), EPD
33077123	115 - 123	-	-	M12	149	191	30	30	4.00	M10	4,100	ITB (KOT), EPD
33077133	125 - 133	-	-	M12	159	201	30	30	4.00	M10	4,100	ITB (KOT), EPD
33077140	132 - 140	DN 125	5	M12	166	208	30	30	4.00	M10	4,100	ITB (KOT), EPD
33077149	139 - 149	-	-	M12	175	217	30	40	4.00	M10	4,100	ITB (KOT), EPD
33077169	159 - 169	DN 150	6	M12	195	257	40	40	4.00	M12	4,900	ITB (KOT), EPD
33077183	173 - 183	-	-	M12	209	271	40	40	4.00	M12	4,900	ITB (KOT), EPD
33077202	192 - 202	-	-	M12	228	290	40	40	4.00	M12	4,900	ITB (KOT), EPD
33077227	217 - 227	DN 200	8	M12	253	315	40	40	4.00	M12	4,900	ITB (KOT), EPD
33077241	229 - 241	-	-	M12	267	329	40	40	4.00	M12	4,900	ITB (KOT), EPD
33077250	240 - 250	-	-	M16	282	338	40	40	4.00	M12	4,900	ITB (KOT), EPD
33077264	254 - 264	-	-	M16	296	352	40	40	4.00	M12	4,900	ITB (KOT), EPD
33077325	315 - 325	DN 300	12	M16	359	415	40	40	4.00	M12	4,900	ITB (KOT)
33077341	329 - 341	-	-	M16	373	429	40	40	4.00	M12	4,900	ITB (KOT)