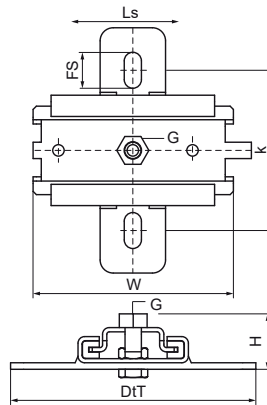
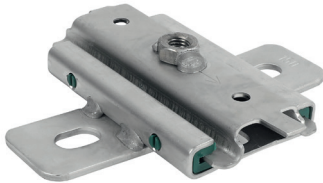


Walraven Stainless Steel Expansion Device (M10)

(M1905)

fixing with sliding assemblies



Features & benefits

- single bracket for accommodation of pipe thermal expansion or contraction
- fix directly on the building structure or in combination with rail systems
- suitable for ceiling mounting (suspended) and floor mounting (standing mounted)
- a variety of connection possibilities, can be combined with pipe clamps
- friction coefficient $\mu = 0.18$; Sliding friction coefficient $\mu = 0.14$
- material: metal parts made of stainless steel A4 (1.4401 / AISI 316); plastic parts made of PA (polyamide)
- temperature resistance up to $+120\text{ }^{\circ}\text{C}$
- max. allowed load: standing = $F_{a,z}$; suspended = $F_{a,z} / 2$



Product Number	Connection Thread	Fixing Slot	Heart To Heart Distance	Slide Distance	Total Height	Total Width	Total Depth	Maximum Allowed Load $F_{a,z}$	Maximum Allowed Load $F_{a,z} / 2$
Reference Letter	G	FS	k	Ls	H	W	DtT	$F_{a,z}$	
Unit description		mm	mm	mm	mm	mm	mm	N	N
6667410	M10	20x12,5	100	80	40	122	134	2,300	2,300