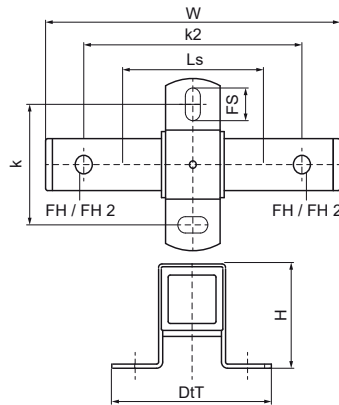
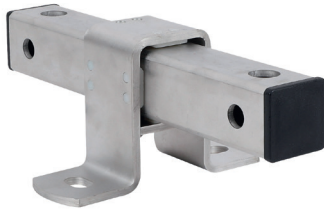


Walraven Stainless Steel Expansion Guide Assembly

(M1910)

fixing with sliding assemblies



Features & benefits

- stable and safe double support for pipe expansion
- fix directly on the building structure or in combination with rail systems
- suitable for ceiling mounting (suspended) and floor mounting (standing mounted)
- tapped with different sized connecting holes (13/17 mm) on opposing faces
- can be combined with HD1701 or HD700 clamps
- material: metal parts made of stainless steel A4 (1.4404/ AISI 316), sliding strips made of PE colour white, endcaps made of PE colour black



Product Number	Fixing Hole	Fixing Hole 2	Anchoring Slot	Slide Distance	Heart To Heart Distance	Heart To Heart Distance 2	Maximum Allowed Load Faz
Reference Letter	FH	FH 2	AS	Ls	k	k 2	Fa,z
Unit description	mm	mm	mm	mm	mm	mm	N
6667813	13	17	20x13	120	100	200	7,500