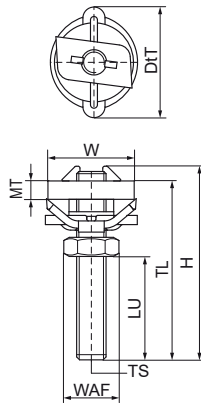


Walraven RapidRail® Stainless Steel Hammerfix

(M2925)

for quick connection of clamps



Features & benefits

- slide nut with stud bolt, washer and Walraven RapidRail® spring
- ready-to-use pre-assembled for a quick fixing, and retains assembly in place before final tightening
- material: metal parts made of stainless steel 1.4401 (AISI 316); spring(s) made of POM (polyoxymethylene), blue

| Product Number | For Rail Type | Thread Size | Thread Length | Usable Length | Material Thickness | Width Across Flats | Torque Moment For Installation | Maximum Allowed Load Faz | Total Height | Total Width | Total Depth |
|------------------|---------------|-------------|---------------|---------------|--------------------|--------------------|--------------------------------|--------------------------|--------------|-------------|-------------|
| Reference Letter | | TS | TL | LU | MT | WAF | T inst. | F _{0,z} | H | W | DfT |
| Unit description | | | mm | mm | mm | mm | Nm | N | mm | mm | mm |
| 6527062 | 30x15, 30x30 | M6 | 25 | 10.2 | 4.00 | 10 | 7.5 | 2,000 | 29 | 29 | 25 |
| 6527084 | 30x15, 30x30 | M8 | 40 | 23 | 5.00 | 13 | 10 | 2,700 | 40 | 29 | 29 |
| 6527088 | 30x15, 30x30 | M8 | 80 | 63 | 5.00 | 13 | 10 | 2,700 | 80 | 29 | 29 |
| 6527094 | 30x15, 30x30 | M10 | 40 | 21 | 5.00 | 17 | 10 | 2,900 | 40 | 29 | 29 |
| 6527098 | 30x15, 30x30 | M10 | 80 | 63 | 5.00 | 17 | 10 | 2,900 | 80 | 29 | 29 |