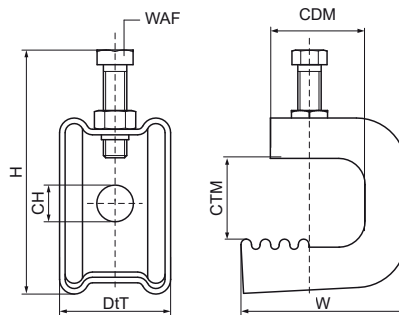
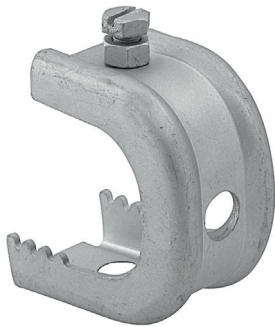


## Walraven Stainless Steel Beam Clamp Model O V2A

(M6410)

for clamping on beam flange



### Features & benefits

- for a solid fixing to steel construction without the need for welding or drilling
- up to flange thickness 45 mm
- with hole  $\varnothing$  14 mm for fixing stud bolt or S-Hook
- with serration for increased security
- material: stainless steel 1.4301 (AISI 304)

Product Number	Maximum Clamping Thickness	Maximum Clamping Depth	Total Height	Total Width	Total Depth	Connection Hole	Thread Size	Width Across Flats	Maximum Allowed Load Faz
Reference Letter	CTM	CDM	H	W	DtT	CH	TS	WAF	F <sub>0,z</sub>
Unit description	mm	mm	mm	mm	mm	mm		mm	N
6077720	18	20	84	45	41	14	-	13	1,100
6077730	30	30	100	60	41	14	-	13	1,200
6077745	45	35	110	70	41	14	-	13	1,300