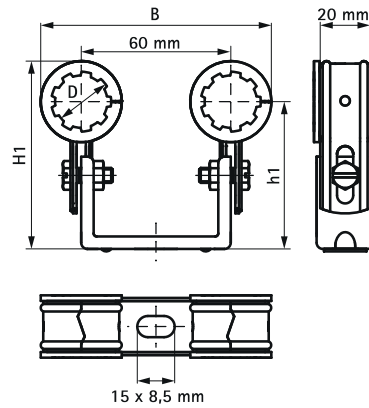


# Walraven Duplo Double Clamp with Lining (Transparant)

(A1506)

for heating pipes



## Features & benefits

- two clamps on connection bracket
- for fixing of two pipes
- space saving
- clamp shells are reinforced
- two parts of the clamp interlock
- bracket reinforced for extra strength
- tube insulation can easily be fitted
- adjustable distance between pipe and wall
- pre-galvanized
- sound insulating lining according DIN 4109

Product Number	Outside Pipe Diameter	Total Width x Total Height x Total Depth	Maximum Height	Fixing Slot	Heart To Heart Distance	Max. Wall Distance Center Clamp	Min. Wall Distance Center Clamp	Maximum Allowed Load Fax
Reference letter	D	W x H x DtT	Ht,max	FS	k			Fa,x
Unit description	(mm)	(mm) x (mm) x (mm)	(mm)	(mm)	(mm)	(mm)	(mm)	(N)
3218015	15	87 x 74 x 25	77.50	15x8.5	60	64	50	100
3218022	22	92 x 81 x 25	83.25	15x8.5	60	67	53	100