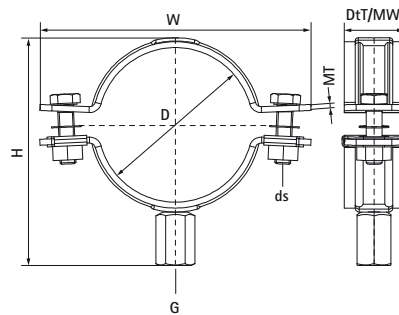


Walraven Heavy Duty Clamp HD500 (M10/12) (Black)

(B1041)

for steel and stainless steel pipes, including fire mains



Features & benefits

- two-part clamp with two locking bolts
- up to and including 5": locking nut is captive, hidden in plastic holder
- heavy design
- bolts secured with anti-loss washers
- with 360° CO2 welded connection nut
- suitable for fire mains (DIN1988-600)
- with M10/12 connection for higher flexibility
- can be used with stainless steel pipe; the epoxy powder coating prevents contact corrosion between clamp and pipe
- surface protection:
- black (RAL 9005) epoxy powder coating (60 µm)
- product is part of the Walraven BIS UltraProtect® 1000 system
- suitable for in- and outdoor applications
- stands min. 1,000 hours salt spray test (max. 5% red rust) according to ISO 9227
- tested for fire safet



Product Number	Outside Pipe Diameter	DN	Pipe Diameter Imperial	Connection Thread	Total Width x Total Height x Total Depth	Material Width x Material Thickness	Screw Size	Approvals	Maximum Allowed Load Faz
Reference letter	D	D	D	G	W x H x DtT	MW x MT	ds		F _{0,z}
Unit description	mm		"		mm x mm x mm	mm x mm			N
3304B078	72 - 78	DN 65	2½	M10/M12	137 x 115 x 32.3	30 x 3	M8	ITB (KOT)	4,000
3304B092	86 - 92	DN 80	3	M10/M12	151 x 129 x 32.3	30 x 3	M8	ITB (KOT)	4,000
3304B116	108 - 116	DN 100	4	M10/M12	175 x 153 x 32.3	30 x 3	M8	ITB (KOT)	4,000