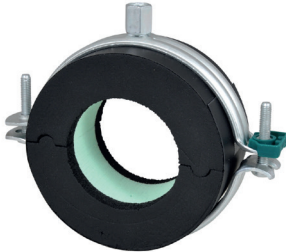


Walraven BISOFIX® E25

(D0512)

for insulated pipes



Features & benefits

- insulated pipe support with pipe clamp Walraven Bifix® G2
- clamp with quick locking system
- for fixing of thermal isolated pipe of steel, copper or stainless steel
- vapour proof glueing to pipe insulation
- when installing the pipe support, always align the contact areas of the insulation shells horizontally (to prevent tensile and pressure forces)
- with self-adhesive strip for easy closing of pipe support
- material: steel clamp; pipe support made of PIR foam (core), synthetic rubber (sides) and a vapour-proof layer of black PVC
- does not contain CFC, HCFC, formaldehyde or cadmium
- product is part of the Walraven UltraProtect® 1000 system
- suitable for in- and outdoor applications
- Walraven Bifix® G2 Clamp: surface protection: stands min. 1,000 hours salt spray test (max. 5% red rust) according to ISO 9227
- working temperature from -45 °C to +105 °C

Product Number	Outside Pipe Diameter	Connection Thread	Total Width x Total Height x Insulation Thickness Total Length		Maximum Allowed Load Faz
<i>Reference letter</i>	<i>D</i>	<i>G</i>	<i>W x H x L</i>	<i>Is</i>	<i>Fa,z</i>
<i>Unit description</i>	<i>(mm)</i>		<i>(mm) x (mm) x (mm)</i>	<i>(mm)</i>	<i>(N)</i>
22114028	28	M8/M10	118 x 100 x 50	24.70	100