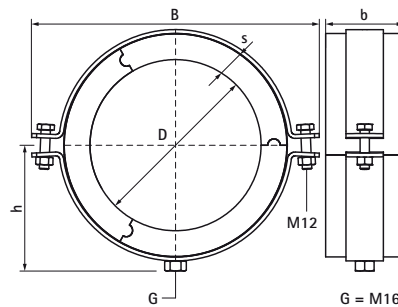
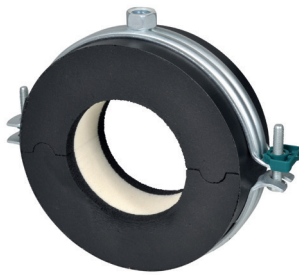


## Walraven BISOFIX® E32 (M16)

(D0514)

for insulated pipes



### Features & benefits

- insulated pipe support with pipe clamp Walraven Bifix® G2
- clamp with quick locking system
- for fixing of thermal isolated pipe of steel, copper or stainless steel
- vapour proof glueing to pipe insulation
- when installing the pipe support, always align the contact areas of the insulation shells horizontally (to prevent tensile and pressure forces)
- with self-adhesive strip for easy closing of pipe support
- material: steel clamp; pipe support made of PIR foam (core), synthetic rubber (sides) and a vapour-proof layer of black PVC
- does not contain CFC, HCFC, formaldehyde or cadmium
- product is part of the Walraven UltraProtect® 1000 system
- suitable for in- and outdoor applications
- Walraven Bifix® G2 Clamp: surface protection: stands min. 1,000 hours salt spray test (max. 5% red rust) according to ISO 9227
- working temperature from -45 °C to +105 °C

Product Number	Outside Pipe Diameter	DN	Connection Thread	Total Width x Total Height x Total Length	Insulation Thickness	Maximum Allowed Load Faz
Reference letter	D	D	G	W x H x L	Is	Fa,z
Unit description	(mm)			(mm) x (mm) x (mm)	(mm)	(N)
22115140	140	DN 125	M16	261 x 235 x 100	33.70	1700
22115168	168	DN 150	M16	322 x 259 x 100	33	2125
22115219	219	DN 200	M16	368 x 309 x 100	33.50	3525
22115273	273	DN 250	M16	363 x 50 x 439	33	4925