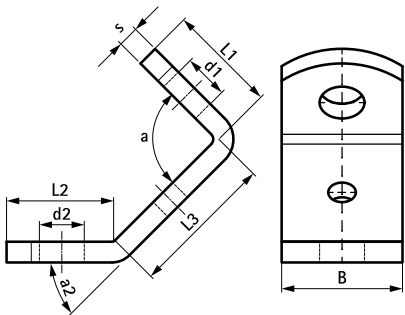


Walraven Threaded Rod Support

(E0560)

for diagonal ties 45 deg



Features & benefits

- for strengthening rail constructions with the aid of threaded rods
- also suitable for bracing cantilever arms
- material: steel 1.0332
- zinc plated
- max. allowed load ( $F_{a,z}$ ) under an angle of 45°

| Product Number   | Angle | Total Width x Total Height x Total Length | Material Thickness | Width | Torque Moment For Installation | Maximum Allowed Load $F_{a,z}$ |
|------------------|-------|---|--------------------|-------|--------------------------------|--------------------------------|
| Reference letter | a     | W x H x L                                 | MT                 | w     | T inst.                        | $F_{a,z}$                      |
| Unit description | (DEG) | (mm) x (mm) x (mm)                        | (mm)               | (mm)  | (Nm)                           | (N)                            |
| 6698013          | 45    | 35 x 61 x 63                              | 6                  | 30    | 30                             | 3000                           |