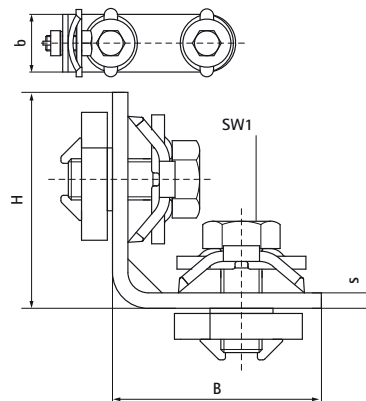


## Walraven RapidRail® Connector 90° (S/S)

(G3507)

to make Walraven RapidRail® fabrications



### Features & benefits

- connector with pre-assembled Walraven RapidRail® Slide nut(s)
- to make rail fabrications
- suitable for rails 27x18, 30x15, 30x20, 30x30, 30x45, 38x40
- ready-to-use pre-assembled for a quick fixing, and retains assembly in place before final tightening
- material: metal parts made of steel 1.0332; spring(s) made of POM (polyoxymethylene), green
- zinc plated
- For detailed technical information about our RAL marked products, please see the RAL datasheet in our web catalogue.



Product Number	Angle	Total Width x Total Height x Total Length	Material Thickness	Torque Moment For Installation	Maximum Allowed Load Faz	Maximum Allowed Load Fax
Reference letter	a	W x H x L	MT	T inst.	Fa,z	Fa,x
Unit description	(DEG)	(mm) x (mm) x (mm)	(mm)	(Nm)	(N)	(N)
6584003	90	30 x 53.50 x 53.50	3	15	1186	345