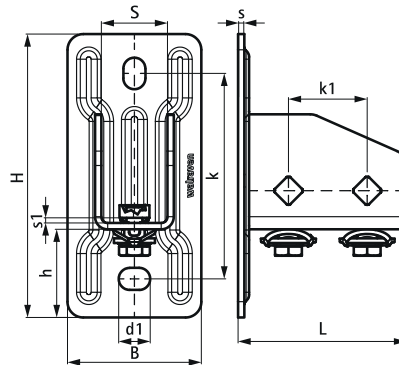


Walraven RapidStrut® Base Plate G2 (BUP1000)

(H1203)

base foot to connect fixing rails



Features & benefits

- flexible base plate for Walraven RapidStrut® rails
- suitable for all Walraven RapidStrut® rail up to 82mm height
- open side of rails 41x41 can be turned to all sides
- at high loads we advise to install with throughbolts
- timesaving with pre-assembled fasteners
- material: metal parts made of steel 1.0332; spring(s) made of POM (polyoxymethylene), green
- product is part of the Walraven UltraProtect® 1000 system
- suitable for in- and outdoor applications
- tested for fire safety according to EN 1366-1



Product Number	Total Width x Total Height x Total Length	Width	Height	Length	Heart To Heart Distance	Anchoring Slot	Fixing Hole	Material Thickness	Material Thickness 2	Maximum Allowed Load Faz
Reference letter	W x H x L	w	h	l	k	AS	FH	MT	MT 2	Fa,z
Unit description	(mm) x (mm) x (mm)	(mm)	(mm)	(mm)	(mm)	(mm)	(mm)	(mm)	(mm)	(N)
665885400	85 x 180 x 107	50	73	100	130.50	20x14	13.80	4	4	3636