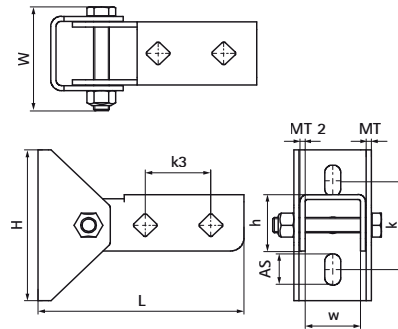


# Walraven RapidStrut® Wall Plate (Hinged) (BUP1000)

(H1225)

hinged base foot to connect fixing rails with an angle



## Features & benefits

- wall plate with hinging U-profile
- for wall fixing of rail
- rail can be fixed with slot downwards or sideways
- also used to strengthen constructions with Walraven RapidStrut® 41x41
- material: steel 1.0332
- product is part of the Walraven Walraven UltraProtect® 1000 system
- suitable for in- and outdoor applications
- stands min. 1,000 hours salt spray test (max. 5% red rust) according to ISO 9227



Product Number	Total Width x Total Height x Total Length	Width	Height	Length	Heart To Heart Distance	Anchoring Slot	Fixing Hole	Material Thickness	Material Thickness 2	Maximum Allowed Load Faz
Reference letter	W x H x L	w	h	l	k	AS	FH	MT	MT 2	Fa,z
Unit description	(mm) x (mm) x (mm)	(mm)	(mm)	(mm)	(mm)	(mm)	(mm)	(mm)	(mm)	(N)
66588814	82.20 x 156.50 x 120	59	55	41	70.60	25x12.2	13.80	4	4	2500