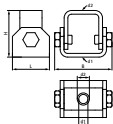
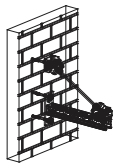
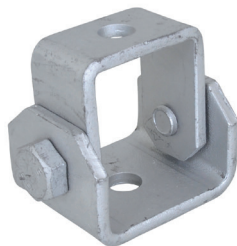


Walraven Adjustable Support (BUP1000)

(H1253)

for suspensions and bracing



Features & benefits

- especially for angled installations with bracings
- suitable for fixing to walls or fixing rails
- adjustable angle up to 90°
- with two holes Ø13 mm
- material: steel
- product is part of the Walraven Walraven UltraProtect® 1000 system
- suitable for in- and outdoor applications
- stands min. 1,000 hours salt spray test (max. 5% red rust) according to ISO 9227



Product Number	For Rail Type	Total Width x Total Height x Total Length	Material Thickness	Width	Maximum Allowed Load Faz
Reference letter		W x H x L	MT	w	Fa,z
Unit description		mm x mm x mm	mm	mm	N
66588818	41x21, 41x41, 41x51, 41x62, 41x82	50 x 63 x 77.5	5	50	5,000