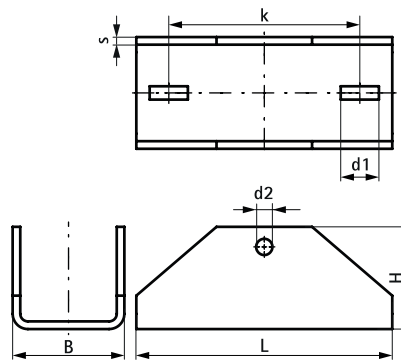
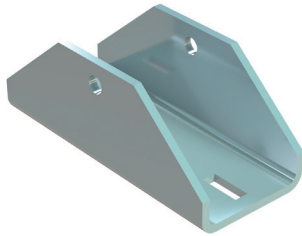


Walraven Maxx BP100H Baseplate

(H20520)

for hinged connections with Maxx profiles



Features & benefits

- U-shaped plate for hinged connections made from Maxx Profiles
- applicable as bracing element for Maxx Profile constructions
- 6581808 to be used in combination with MX80 profiles and Bolt Set M16x120mm (Part No. 614581612, to be ordered separately)
- 6581815 to be used in combination with MX100 profiles and Bolt Set M16x140mm (Part No. 614581614, to be ordered separately)
- material: steel 1.0044 (S275JR)
- hot dip galvanized

Product Number	Total Width x Total Height x Total Length	Material Thickness	Width	Maximum Allowed Load Faz	Maximum Allowed Load Fax
Reference letter	W x H x L	MT	w	Fa,z	Fa,x
Unit description	(mm) x (mm) x (mm)	(mm)	(mm)	(N)	(N)
6581808	97 x 100 x 268	8	81	14100	8250
6581815	101 x 107 x 268	8	101	14100	8250