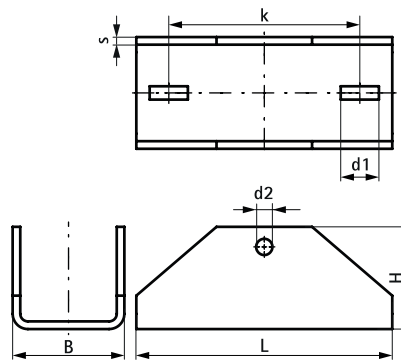
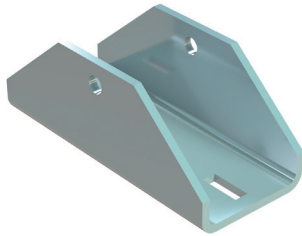


Walraven Maxx BP100H Baseplate

(H20520)

for hinged connections with Maxx profiles



Features & benefits

- U-shaped plate for hinged connections made from Maxx Profiles
- applicable as bracing element for Maxx Profile constructions
- 6581808 to be used in combination with MX80 profiles and Bolt Set M16x120mm (Part No. 614581612, to be ordered separately)
- 6581815 to be used in combination with MX100 profiles and Bolt Set M16x140mm (Part No. 614581614, to be ordered separately)
- material: steel 1.0044 (S275JR)
- hot dip galvanized

Product Number	For Rail Type	Total Width x Total Height x Total Length	Material Thickness	Width	Maximum Allowed Load $F_{a,z}$	Maximum Allowed Load $F_{a,x}$
Reference letter		$W \times H \times L$	MT	w	$F_{a,z}$	$F_{a,x}$
Unit description		mm x mm x mm	mm	mm	N	N
6581808	80x80	97 x 100 x 268	8	81	14,100	8,250
6581815	100x100	101 x 107 x 268	8	101	14,100	8,250