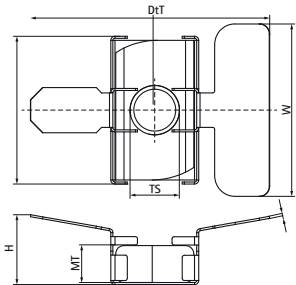


Walraven Maxx Wingnut

(H20523)

for connecting clamps and brackets to Maxx Heavy Rail Profiles



Features & benefits

- patented slide nut for connecting clamps, sliders or RapidStrut® Rails to Maxx Profiles
- advised to be used with threaded rods M12, washers Ø 40mm and hexagon nuts M12
- to be used with thread adaptors for connecting clamps M16 or 1/2"
- material: slide nut made from steel 1.0332; aid tray made from stainless steel 1.4301
- slide nut: hot dip galvanized

Product Number	Thread Size	Material Thickness	Maximum Allowed Load Fax	Maximum Allowed Load Faz	Total Width x Total Height x Total Depth
Reference letter	TS	MT	Fa,x	Fa,z	W x H x DtT
Unit description		(mm)	(N)	(N)	(mm) x (mm) x (mm)
651867112	M12	9	2100	11400	58.27 x 17 x 42