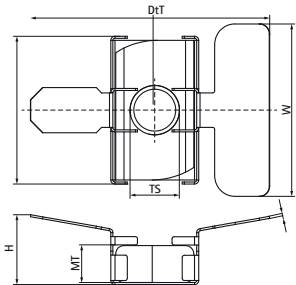


Walraven Maxx Wingnut

(H20523)

for connecting clamps and brackets to Maxx Heavy Rail Profiles



Features & benefits

- patented slide nut for connecting clamps, sliders or RapidStrut® Rails to Maxx Profiles
- advised to be used with threaded rods M12, washers Ø 40mm and hexagon nuts M12
- to be used with thread adaptors for connecting clamps M16 or 1/2"
- material: slide nut made from steel 1.0332; aid tray made from stainless steel 1.4301
- slide nut: hot dip galvanized

Product Number	For Rail Type	Thread Size	Material Thickness	Maximum Allowed Load Fax	Maximum Allowed Load Faz	Total Width x Total Height x Total Depth
Reference letter		TS	MT	Fa,x	Fa,z	W x H x DtT
Unit description			mm	N	N	mm x mm x mm
651867112	80x80, 100x100, 100x120, 100x150	M12	9	2,100	11,400	58.27 x 17 x 42