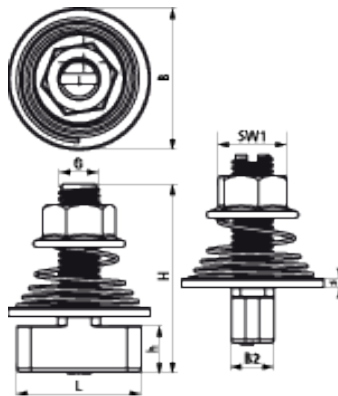


Walraven Maxx HF Hammerfix

(H20526)

for fixing to Maxx Heavy Rail Profiles



Features & benefits

- form-locking connector
- retains assembly in place before final tightening
- pre-assembled and ready to use for a quick fixing in profile perforation by a push and 90° turn
- with visible mark on top to see the position of hammer end
- with square shaft to block in the profile hole pattern when tightening
- material: steel, strength class 8.8; spring made of stainless steel (AISI 316)
- hot dip galvanized

Product Number	Thread Size	Usable Length	Total Width x Total Height x Total Length	Connection Nut Spanner Width (WAF)	Torque Moment For Installation	Maximum Allowed Load Faz
Reference letter	TS	LU	W x H x L	WAF, cn	T inst.	Fa, z
Unit description		(mm)	(mm) x (mm) x (mm)	(mm)	(Nm)	(N)
65219214	M12	35	40 x 55 x 40	19	75	14500