

# Walraven RapidStrut® Connector 90° / 2D (BUP1000)

(H2823)

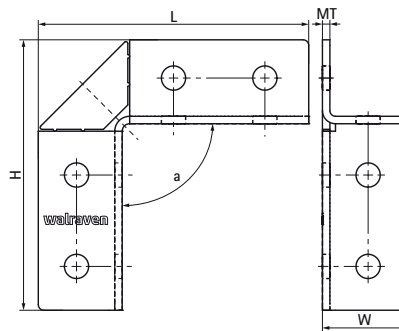
for rigid angle connections



6659 8 914



6659 8 918



## Features & benefits

- flexible connector allows different rail positioning
- strong connection by surrounding the rail
- material: steel 1.0332
- product is part of the Walraven Walraven UltraProtect® 1000 system
- suitable for in- and outdoor applications
- stands min. 1,000 hours salt spray test (max. 5% red rust) according to ISO 9227



Product Number	For Rail Type	Angle	Total Width x Total Height x Total Length	Material Thickness	Width
Reference letter		a	W x H x L	MT	w
Unit description		°	mm x mm x mm	mm	mm
66598914	41x21, 41x41, 41x51, 41x62, 41x82	90	45 x 96 x 96	4	41
66598918	41x21, 41x41, 41x51, 41x62, 41x82	90	45 x 145 x 145	4	41