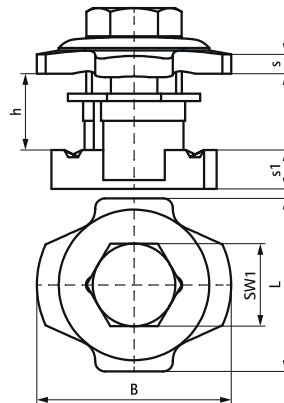


## Walraven PushStrut Button

(H2905)

for easy installation of complex rail constructions



### Features & benefits

- universal button: easily combined with all common Walraven RapidStrut® profiles and all Walraven PushStrut Connectors
- teeth with force fit connections offer more stability
- timesaving and flexible
- easy to remove and reusable
- 3D constructions due to 3D Connectors
- material: steel
- zinc plated
- The max. allowed load  $F_{az}$  in the table refers to rails and cantilever arms with a material thickness of 2.5 mm.
- The  $F_{az}$  at a thickness of 1.5 mm profile thickness = 3,500 N.

Product Number	Thread Size	Material Thickness	Maximum Allowed Load $F_{ax}$	Maximum Allowed Load $F_{az}$	Total Width x Total Height x Total Depth
<i>Reference letter</i>	<i>TS</i>	<i>MT</i>	<i><math>F_{a,x}</math></i>	<i><math>F_{a,z}</math></i>	<i><math>W \times H \times D \times T</math></i>
<i>Unit description</i>		<i>(mm)</i>	<i>(N)</i>	<i>(N)</i>	<i>(mm) x (mm) x (mm)</i>
66519910	M10	8	3000	5000	35.60 x 37.72 x 40