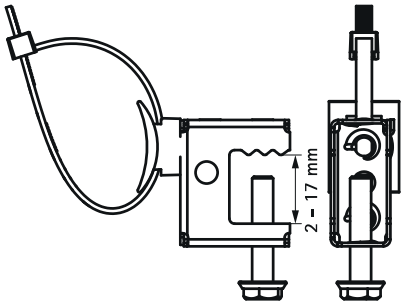
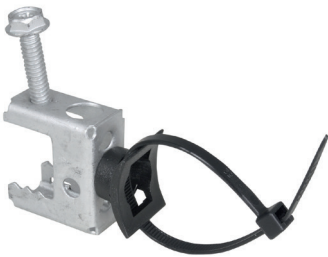


Walraven Britclips® Master Clamp / Cable Tie

(J15160)

for flange



Features & benefits

- for a solid fixing to steel construction without the need for welding or drilling
- various fixing possibilities to clamp (horizontal and vertical)
- with saddle for cable tie attachment (up to width 7.6 mm)
- material: bracket made of spring steel (type CS70); tie-wrap clip of PA (polyamide), black
- surface treatment: Delta-Tone 9000 (480 hours)

Product Number	Code	Flange	Type Of Accessory / Spare Part	Total Width x Total Height x Total Depth	Maximum Allowed Load Faz
Reference letter		Fl		W x H x DtT	Fa,z
Unit description		mm		mm x mm x mm	N
EM53320017	MCCT	2-17	No tie	20 x 44 x 44	220