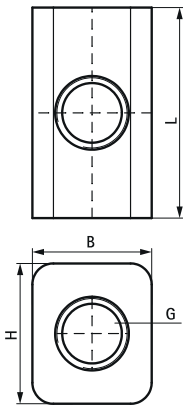


Walraven Universal Cube

(K1805)

assembly cube for fastenings



Features & benefits

- universal cube with four threaded holes for fastening applications
- material: steel 1.0038
- zinc plated

Product Number	Connection Thread	Thread Type	Total Width x Total Height x Total Length
Reference letter	G	TT	W x H x L
Unit description			(mm) x (mm) x (mm)
6443908	M8	Metric	17 x 19 x 30