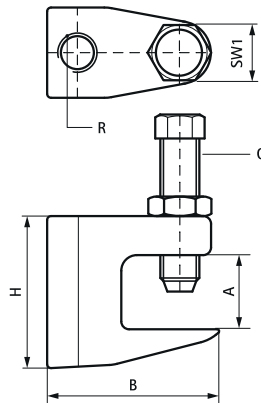


Walraven Beam Clamp Model C (BUP1000)

(K2003)

for clamping on beam flange



Features & benefits

- for a solid fixing to steel construction without the need for welding or drilling
- according to VdS-regulations an additional safety strap should be used when supporting pipes above DN65
- bolt with hexagon head according to DIN 933 strength class 8.8, screw point with cup ring according to EN ISO 4753 and lock nut
- product is part of the Walraven UltraProtect® 1000 system
- suitable for in- and outdoor applications
- stands min. 1,000 hours salt spray test (max. 5% red rust) according to ISO 9227
- FM approval and UL listed for hanger rod size M10



Product Number	Maximum Clamping Thickness	Maximum Clamping Depth	Total Width x Total Height x Total Depth	Connection Hole	Thread Size	Width Across Flats	Maximum Allowed Load Faz
<i>Reference letter</i>			<i>W x H x DtT</i>	<i>CH</i>	<i>TS</i>	<i>WAF</i>	<i>Fa,z</i>
<i>Unit description</i>	<i>(mm)</i>	<i>(mm)</i>	<i>(mm) x (mm) x (mm)</i>	<i>(mm)</i>		<i>(mm)</i>	<i>(N)</i>
6008008	23	20	50 x 65 x 21		M8	17	2500
6008010	20	20	44 x 62 x 21		M10	17	2500
6008910	20	20	44 x 42 x 21	11		17	2500