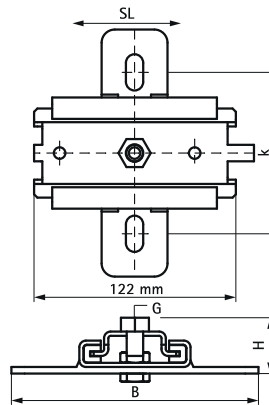
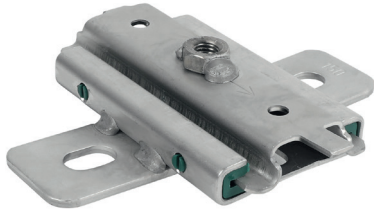


Walraven Stainless Steel Expansion Device (M10)

(M1905)

fixing with sliding assemblies



Features & benefits

- single bracket for accommodation of pipe thermal expansion or contraction
- fix directly on the building structure or in combination with rail systems
- suitable for ceiling mounting (suspended) and floor mounting (standing mounted)
- a variety of connection possibilities, can be combined with pipe clamps
- friction coefficient $\mu = 0.18$; Sliding friction coefficient $\mu = 0.14$
- material: metal parts made of stainless steel A4 (1.4401 / AISI 316); plastic parts made of PA (polyamide)
- temperature resistance up to $+120\text{ }^{\circ}\text{C}$
- max. allowed load: standing = $F_{a,z}$; suspended = $F_{a,z} 2$

Product Number	Connection Thread	Total Width x Total Height x Total	Fixing Slot	Heart To Heart	Slide Distance	Maximum Allowed	Maximum Allowed
		Depth		Distance		Load $F_{a,z}$	Load $F_{a,z} 2$
Reference letter	G	$W \times H \times D \times T$	FS	k	L_s	$F_{a,z}$	
Unit description		mm x mm x mm	mm	mm	mm	N	N
6667410	M10	0 x 0 x 150	20x12.5	100	80	2,300	2,300