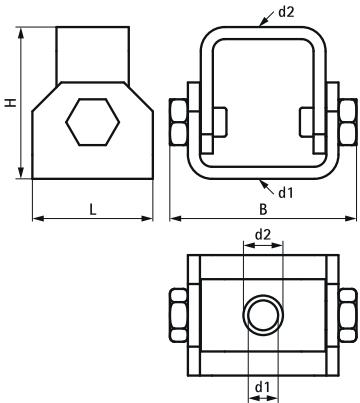


Walraven RapidStrut® Stainless Steel Adjustable Support

(M5320)

for suspensions and bracing



- Features & benefits**
- especially for angled installations with bracings
 - suitable for fixing to wall, ceiling, floor or directly on rails
 - adjustable angle up to 90°
 - with two holes Ø13 mm
 - material: stainless steel 1.4401 (A4) - EN 10088, AISI 316
 - Max. allowed load: when used at an angle of 45° on wall/ceiling.

Product Number	For Rail Type	Total Width x Total Height x Total Length	Material Thickness	Width	Maximum Allowed Load Faz
Reference letter		W x H x L	MT	w	Fa,z
Unit description		mm x mm x mm	mm	mm	N
66587718	41x21, 41x41	50 x 63 x 77.5	5	50	5,000