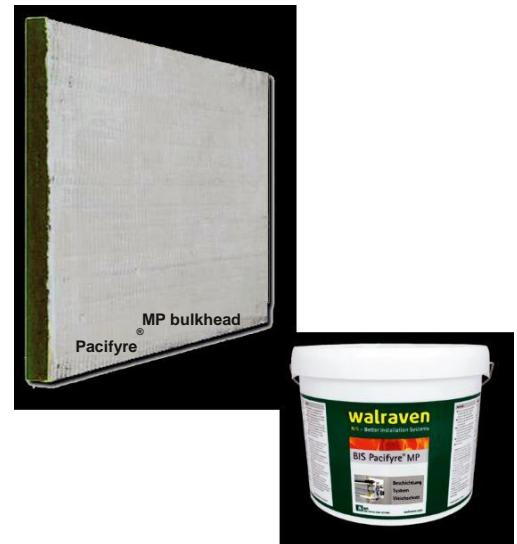


Technical information

Pacifyre® MP soft bulkhead



Pacifyre® MP
fire protection coating

Assembly Instructions

Firestopping of combustible and non-combustible
pipes, and electrical cables

United Kingdom

Ireland

Walraven Ltd.
18 Wildmere Road
Banbury
Phone +44 (0)1295 75 34 00
Sales.uk@walraven.com

Walraven Group

Mijdrecht(NL) Tienen(BE) Bayreuth(DE)
Banbury (GB) Malmö (SE) Grenoble (FR)
Barcelona (ES) • Kraków (PL) • Miłada
Bolesław (CZ) • Moscow (RU) • Kyiv (UA)
Detroit (USA) • Shanghai (CN) • Dubai (AE)
Budapest (HU) Bayreuth (DE)

Pacifyre® MP soft bulkhead

Product description

For sealing combustible, non-combustible pipes and cable penetrations to EI 90/120 requirements in accordance with EN 13501 in walls (solid walls or lightweight partitions ≥ 100 mm) and ceilings (≥ 150 mm).

European Approval: ETA-15/0014

Austria: classification report 210006105-1

Switzerland: VKF approval Z23932, Z3933, Z23934 and Z23936

Technical specifications

■ Pacifyre® MP Soft Bulkhead

Article No.	2139306005
Dimensions	1,000 x 625 x 50mm

■ Pacifyre® MP fire protection coatings:

- paintable and sprayable coating (requirement approx. 1.86 kg/m²) item no. for 12.5 kg/bucket 2139300001
- coating to be trowelled (requirement approx. 2.05 kg/m²)
Item No. for 12.5 kg/bucket 2139300002
Item No. for 300 ml/cartridge 2139300003



Pacifyre® MP
fire protection coating

Area of use and application

Approved pipe and cable systems

- Maximum bulkhead size
 - Wall: 1,100 mm (width) x 2,200 mm (height)
 - Ceiling: 1,000 mm (width) x unlimited (length) individual
- Cables up to max. outer Ø 80 mm
- Cable bundles up to max. outer Ø 100 mm (per cable Ø < 21mm)
- Individual conduits up to max. outer Ø 63 mm made of PVC or polyolefins (with or without cable assignment)
- Empty tube bundle up to max. outer Ø 125mm (with or without cable assignment)
- Combustible supply and disposal lines up to max. outer Ø 160 mm in all common pipe materials such as
 - PVC, PP, PE
- Copper, steel and stainless steel pipes with synthetic rubber insulation up to a max. outer Ø of 88.9 mm
- Copper, steel and stainless steel pipes with mineral wool insulation up to a maximum outer diameter of 160 mm

Approved insulation for metallic pipelines

- Synthetic rubber with an insulation thickness of 11-41.5 mm
- Mineral or stone wool insulation with an insulation thickness of 20-50 mm

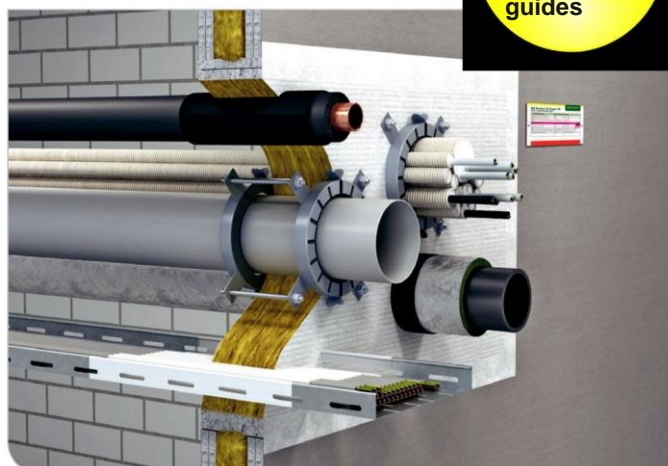
Combination with:

- In wall/ceiling: Pacifyre® M-Tube Jacket On
- Wall/Ceiling: Pacifyre® AWM II Cuff On
- Wall/Ceiling: Pacifyre® conduit bulkhead

The foreclosure must be marked!

Product Features and Benefits

- Coatings that can be brushed, sprayed or trowelled
- Suitable for installation in wet or damp rooms.
- Fireproof and smoke gas-tight for at least 90 minutes.
- Easy to install and retrofit
- Proof of professional qualification is required to use the system.
Please get in touch with a qualified contact person in your area.



Also for
Cover-
through
guides

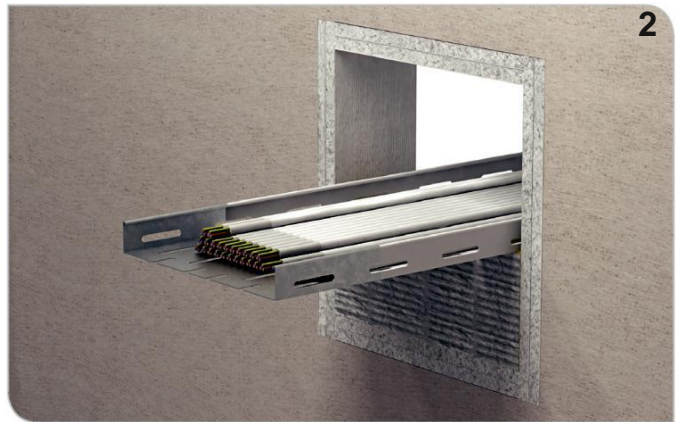
COMBINATION SEAL

Pacifyre® MP soft bulkhead

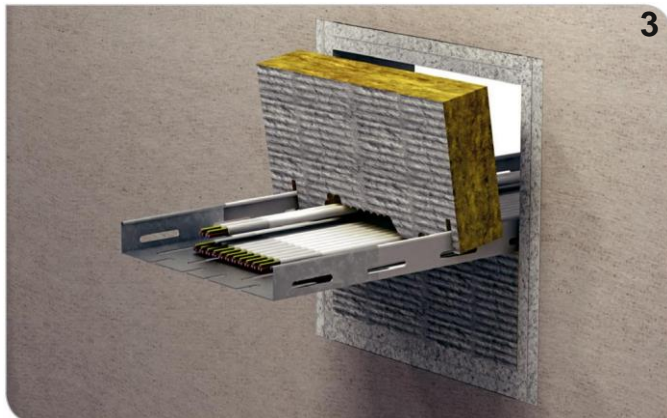
Assembly Instructions



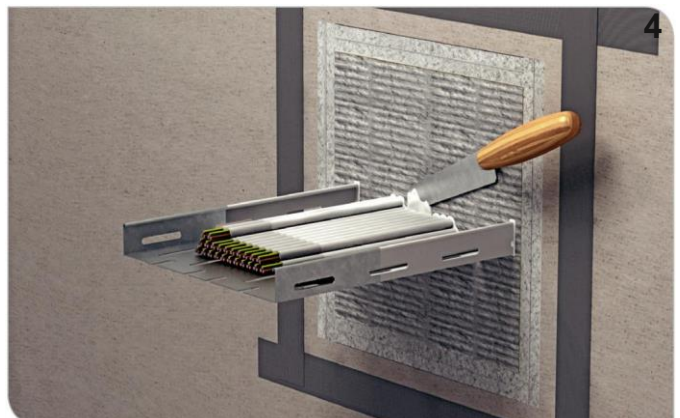
Clean opening and remove all loose parts. Cover opening with Pacifyre MP fire protection coating.



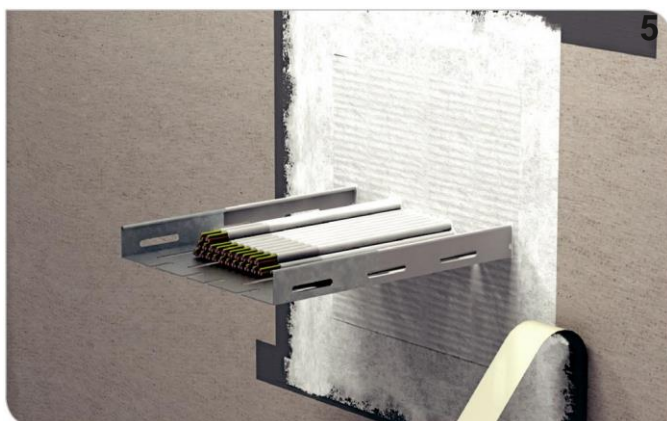
Cover cable and cable tray with Pacifyre MP fire protection coating and add Pacifyre MP boards on both sides.



Close the opening completely, seal joint gaps with mineral wool soaked in the coating.



Cover all remaining joints/gaps with Pacifyre MP coating and then fix tape at a distance of 2 cm to the edges all around in order to be able to coat the entire surface.



Finally, cover the entire surface within the surrounding area with Pacifyre MP coating (dry layer thickness > 1 mm).



Pull off the adhesive tape and attach the filled-in identification card next to the installation.

Note: The installation guidelines and specifications must be constantly observed!